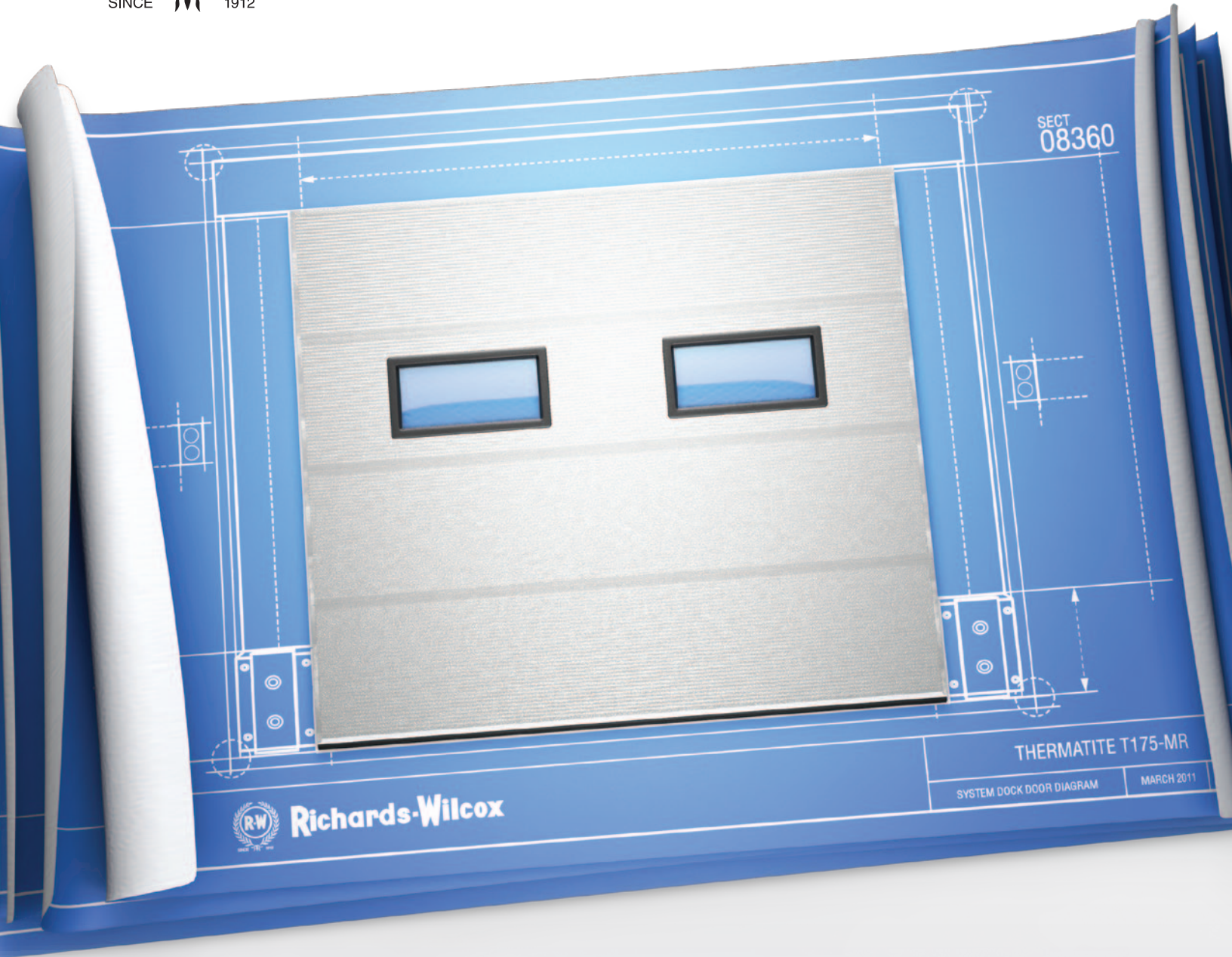




# Richards-Wilcox

Sectional Overhead Doors

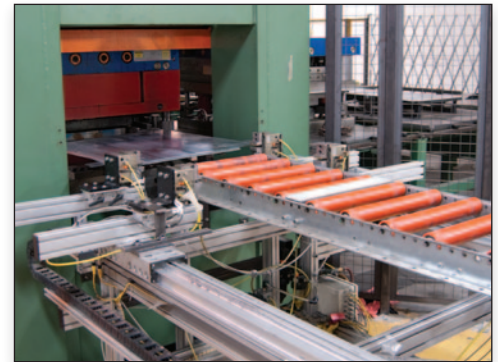


ARCAT®

## Engineered to **fit**

Thermatite and Alumatite Sectional Overhead Doors

# The **Richards-Wilcox** Difference



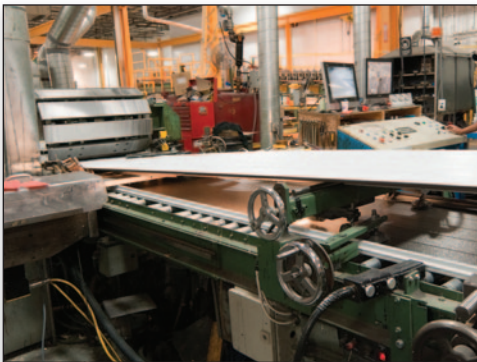
## Since 1912

Incorporated in 1912, Richards-Wilcox was the first company in Canada to introduce sectional overhead doors and establish nationwide distribution channels. In the 1970s, RW launched a full line of commercial steel sectional doors. In the 1980s, we began production of a continuous polyurethane insulated commercial section – one of only three lines of its kind in North America.

The subsequent decades have brought continual improvements to our product offerings and manufacturing processes, including the addition of a full range of residential polyurethane insulated sectional doors. Approaching our first centenary, RW is proud of our rich history of excellence. We are committed to be innovators of sectional door design and purpose to be the highest quality door systems manufacturer in the world.

## Quality Production

Every aspect of our manufacturing operation is subject to the highest standards. Our team of engineers is dedicated to researching state-of-the-art design and production methods. An in-house testing facility and uncompromising quality control inspections make certain that only premium products leave the premises. Using the best available materials and technology guarantees that the finished door system will be reliable, strong, and worry-free for years to come.



## Neufoam™

In order to achieve the highest thermal values and stability, sections are evenly filled with CFC/HCFC-free Neufoam™ polyurethane insulation in a computer-controlled continuous process. Consistently cavity-free, uniform insulation ensures excellent adhesion to the sheet metal resulting in an exceptional strength to weight ratio that qualifies for a wide range of applications.

## Expert Advice

From the initial planning stages to final installation, RW Authorized Dealers and Installers are located in over 40 countries around the globe to provide you with expert service and advice. They can help you select the right door system for your project specifications and ensure that it is installed to run smoothly, efficiently and provide many years of low-maintenance operation. Additional support is readily available from our excellent customer service team and sales staff.



## Environment

At RW, we take our environmental responsibility seriously. Our CFC/HCFC free Neufoam™ insulation is zero-ozone depleting and provides higher thermal properties which result in significant energy savings for your facility. RW door systems can be credited in the LEED (Leadership in Energy & Environmental Design) certification program for recycled contents, efficiencies, occupant's comfort, and innovative design.

# Door Characteristics

		Thermatite Doors					Alumatite Doors			
		T150-MR / T150	T175-MR / T175	ADV200-MR / ADV200	T175-20	T200A-MR / T200A	A175	A175T	A150	A150T
Face Material		Steel	Steel	Steel	Steel	Aluminum	Aluminum	Aluminum and Steel	Aluminum	Aluminum and Steel
Door Width (recommended max.)		29'-4" (8941mm)	36'-2" (11024mm)	30'-2" (9195mm)	36'-2" (11024mm)	24'-2" (7366mm)	16'-2" (4928mm)	16'-2" (4928mm)	16'-2" (4928mm)	16'-2" (4928mm)
Door Height (max.)		22' (6706mm)	22' (6706mm)	22' (6706mm)	22' (6706mm)	22' (6706mm)	16'-0" (4877mm)	16'-0" (4877mm)	16'-0" (4877mm)	16'-0" (4877mm)
Section Thickness		1 1/2" (38mm)	1 3/4" (45mm)	2" (51mm)	1 3/4" (45mm)	2" (51mm)	1 3/4" (45mm)	1 3/4" (45mm)	1 1/2" (38mm)	1 1/2" (38mm)
Section Joint		1/4" (6mm) Ship-Lap	1/4" (6mm) Ship-Lap	1/4" (6mm) Ship-Lap	1/4" (6mm) Ship-Lap	1/4" (6mm) Ship-Lap	1/4" (6mm) Ship-Lap	1/4" (6mm) Ship-Lap	1/4" (6mm) Ship-Lap	1/4" (6mm) Ship-Lap
Insulation Foamed in place polyurethane, sections thermal value	R ft² hF/Btu	13.21	16.00	18.28	16.00	18.28		16.00*		13.21*
	U W/m²K	0.430	0.355	0.311	0.355	0.311		0.355*		0.430*
Exterior Sheet Aluminum or hot dipped galvanized steel, stucco surface texture	Thickness	0.016" (0.41mm)	0.019" (0.48mm)	0.016" (0.41mm)	0.037" (0.94mm)	0.025" (0.64mm)				
	Standard Finish	Brown, Silver, White, Bronze, Charcoal Grey, Forest Green	Brown, Silver, White	White	White	White	Mill, Clear-Anodized, White	White, Silver	Mill, White	White
	Pattern	Multi-Ribbed / Ribbed	Multi-Ribbed / Ribbed	Multi-Ribbed / Ribbed	Flush	Multi-Ribbed / Ribbed	Paneled	Paneled/ Thermatite Section	Paneled	Paneled/ Thermatite Section
Interior Sheet Aluminum or hot dipped galvanized steel, stucco surface texture	Standard Finish	White, Silver†	White, Silver†	White	White	White	Mill, Clear-Anodized, White		Mill, White	
Glazing Options Details on Page 9	Type	AA, B, CPL, D, E, FV	AA, B, CPL, D, E, FV	AA, B, CPL, D, E, FV	AA, B, CPL, D, E, FV	AA, B, CPL, D, E, FV	FV	FV	FV	FV

Page 4-5

Page 6-7

† Available when silver exterior is selected

\* Thermatite Section



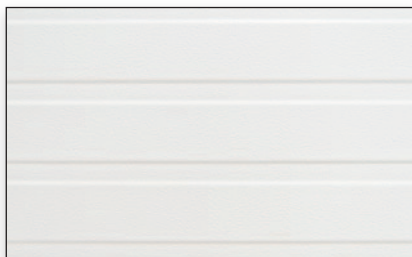


## Thermatite Sectional Insulated Steel Door Models

T150-MR, T150, T175-MR, T175, ADV200-MR, ADV200, T175-20, T200A-MR, T200A



**Multi-Ribbed**



**Ribbed**

### Section Overview

- Insulated sections fabricated from pre-painted, hot dipped galvanized steel or aluminum sheets with rigid polyurethane insulation core, CFC and HCFC free, face sheet stucco embossed and rib reinforced (T175-20 is flush)
- Sections feature thermal break, steel-polyurethane-steel sandwich formed by continuous process
- Sections formed with ship-lap joint

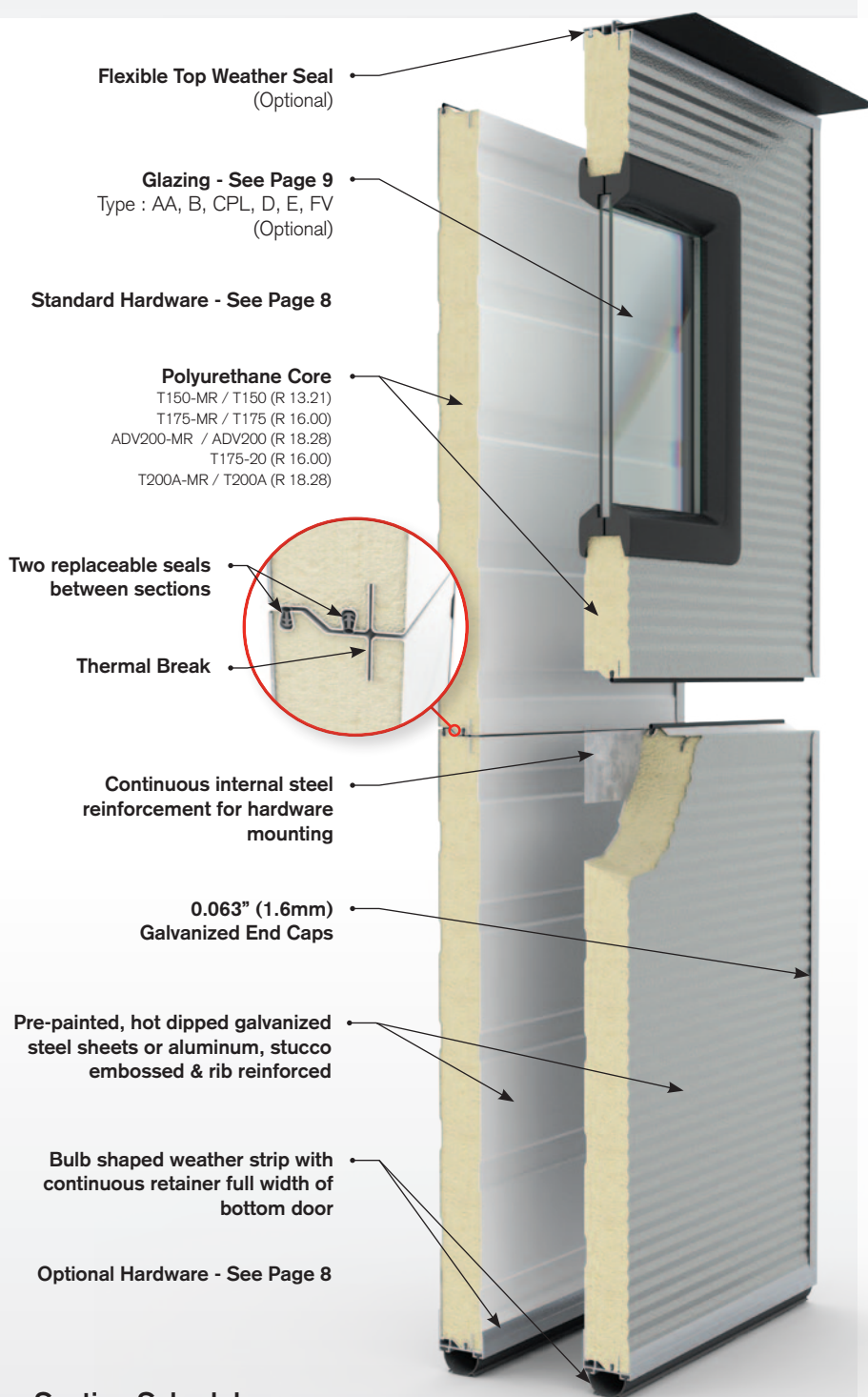
### Unique Multi-Ribbed (MR) Profile

- Multi-Ribbed profile complements contemporary architecture
- Perfect choice when aesthetics are a key consideration
- Non-repeating stucco surface texture resists scratches and dirt

### Ribbed Profile

- Recognized as a standard look on many door systems that are already installed
- RW can provide matching section replacement options to customers quickly and efficiently

# Product Specifications



## Section Schedule

Door Height	Sections High	Door Width	Max no. of Windows
7'-1" to 8'-1" (2159mm to 2464mm)	4	8'-0" to 9'-2" (2438mm to 2794mm)	2
8'-2" to 10'-1" (2489mm to 3073mm)	5	9'-3" to 12'-2" (2819mm to 3708mm)	3
10'-2" to 12'-1" (3099mm to 3683mm)	6	12'-3" to 16'-2" (3734mm to 4928mm)	4
12'-2" to 14'-1" (3708mm to 4293mm)	7	16'-3" to 19'-2" (4953mm to 5842mm)	5
14'-2" to 16'-1" (4318mm to 4902mm)	8	19'-3" to 24'-2" (5867mm to 7366mm)	6
16'-2" to 18'-1" (4928mm to 5512mm)	9	24'-3" to 25'-2" (7391mm to 7671mm)	7

## Section Details

### Section Thickness

T150-MR / T150	1 1/2" (38mm)
T175-MR / T175	1 3/4" (45mm)
ADV200-MR / ADV200	2" (51mm)
T175-20	1 3/4" (45mm)
T200A-MR / T200A	2" (51mm)

### Thermal Value of Sections

T150-MR / T150	<b>R</b> 13.21 ft <sup>2</sup> hF/Btu / <b>U</b> 0.430 W/m <sup>2</sup> K
T175-MR / T175	<b>R</b> 16 ft <sup>2</sup> hF/Btu / <b>U</b> 0.355 W/m <sup>2</sup> K
ADV200-MR / ADV200	<b>R</b> 18.28 ft <sup>2</sup> hF/Btu / <b>U</b> 0.311 W/m <sup>2</sup> K
T175-20	<b>R</b> 16 ft <sup>2</sup> hF/Btu / <b>U</b> 0.355 W/m <sup>2</sup> K
T200A-MR / T200A	<b>R</b> 18.28 ft <sup>2</sup> hF/Btu / <b>U</b> 0.311 W/m <sup>2</sup> K

### Face Sheet Profile

T150-MR / T150	Multi-Ribbed / Ribbed
T175-MR / T175	Multi-Ribbed / Ribbed
ADV200-MR / ADV200	Multi-Ribbed / Ribbed
T175-20	Flush
T200A-MR / T200A	Multi-Ribbed / Ribbed

### Face Sheet Thickness

T150-MR / T150	0.016" (0.41mm)
T175-MR / T175	0.019" (0.48mm)
ADV200-MR / ADV200	0.016" (0.41mm)
T175-20	0.037" (0.94mm)
T200A-MR / T200A	0.025" (0.64mm)

### Maximum Opening Width

T150-MR / T150	29'-4" (8941mm)
T175-MR / T175	36'-2" (11024mm)
ADV200-MR / ADV200	30'-2" (9195mm)
T175-20	36'-2" (11024mm)
T200A-MR / T200A	24'-2" (7366mm)

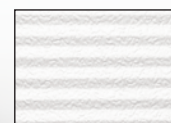
### Maximum Opening Height

All models	22' (6706mm)
------------	--------------

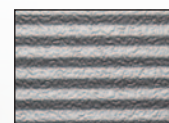
### Finish

Two coat, baked-on paint system on exterior side, primer and polyester finish coat.

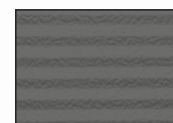
T150-MR / T150	White / Brown / Silver / Bronze / Charcoal Grey / Forest Green
T175-MR / T175	White / Brown / Silver
ADV200-MR / ADV200	White
T175-20	White
T200A-MR / T200A	White



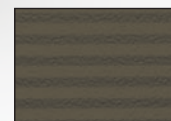
White



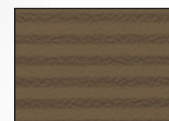
Silver



Charcoal Grey



Bronze



Brown



Forest Green

Additional colors are available upon request.

## Warranty

**10 years against delamination of the panels**  
**1 year on materials and workmanship**



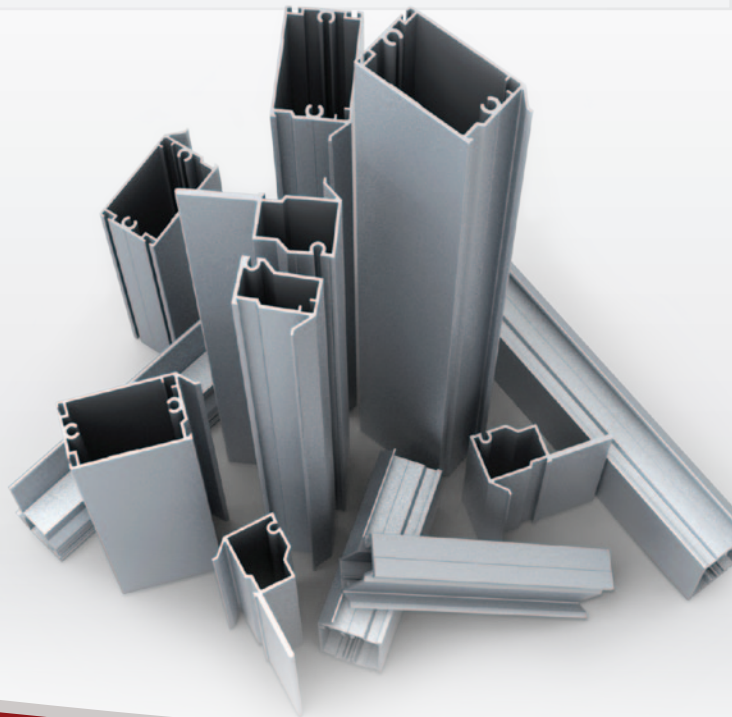


## Alumatite Sectional Aluminum Door Models

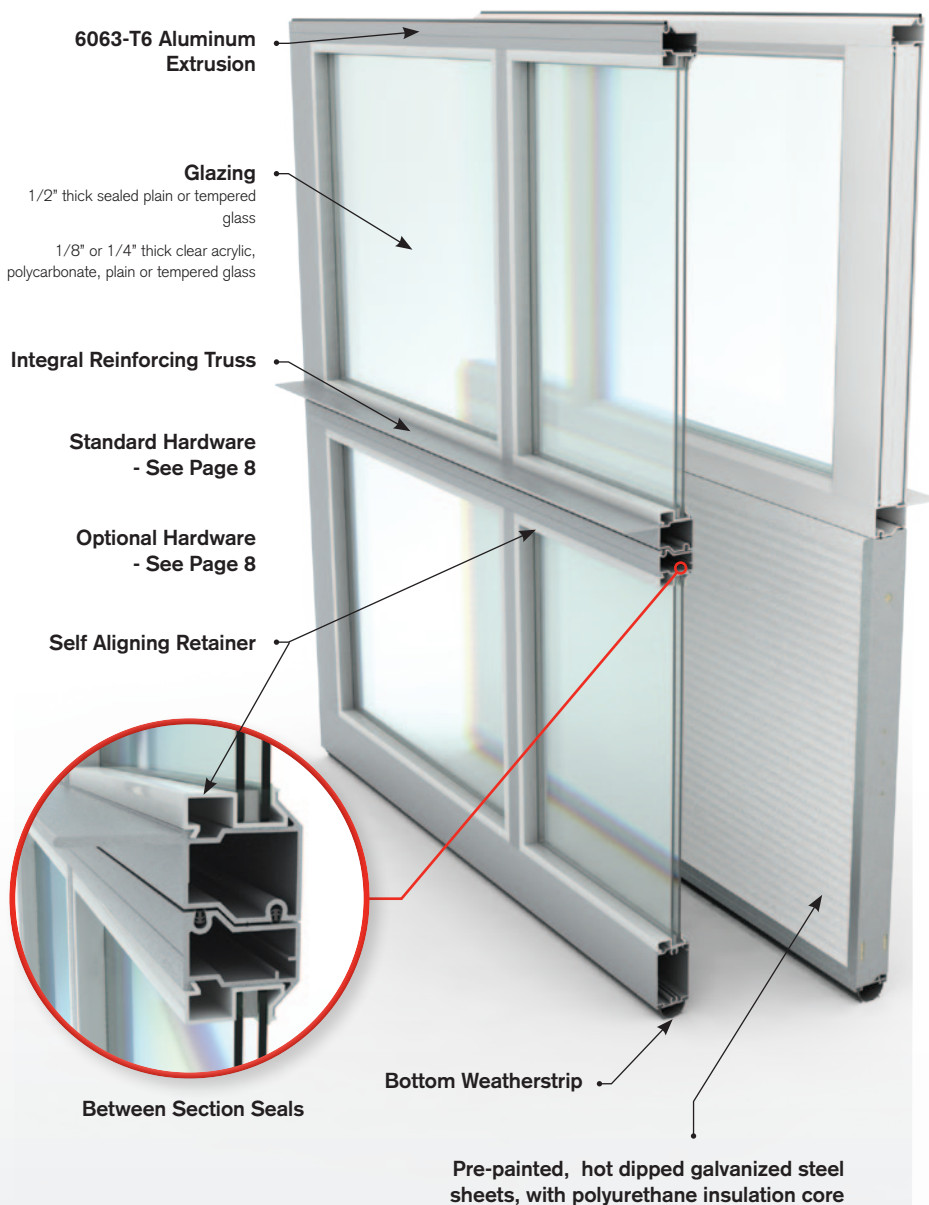
A150, A175, A150T, A175T

Dependable door systems for facilities needing maximum light and visibility.

Alumatite Door Systems are designed to provide an attractive and practical solution when maximum light and/or visibility is required. Built to withstand heavy use and high traffic using extruded aluminum alloy rails and stiles with a full width integral horizontal reinforcing truss at each pair of meeting rails. Highest quality hardware components provide years of dependable operation. Choose from a variety of finish and glazing options or configure your door with Thermatite panels for extra strength and additional energy savings.



# Product Specifications



## Panel & Section Schedule

Door Width	Panels Wide	Door Height	Sections High
Up to 9'-2" (2794mm)	2	7'-1" to 8'-1" (2159mm to 2464mm)	4
		8'-2" to 10'-1" (2489mm to 3073mm)	5
9'-3" to 12'-2" (2819mm to 3708mm)	3	10'-2" to 12'-1" (3099mm to 3683mm)	6
		12'-2" to 14'-1" (3708mm to 4293mm)	7
12'-3" to 16'-2" (3734mm to 4928mm)	4	14'-2" to 16'-1" (4318mm to 4902mm)	8

## Section Details

### Section Thickness

A150 / A150T	1 1/2" (38mm)
A175 / A175T	1 3/4" (45mm)

### Section Framing

Fabricated from 6063-T6 aluminum alloy extrusions, extrusion thickness 0.075" (1.9mm) thick, and 0.105" (2.7mm) thick at hardware mounting locations.

- **End stiles:** 3 3/8" (86mm) wide aluminum for single end roller brackets; 6 3/8" (162mm) for double end roller brackets
- **Centre stiles:** 2" (51mm) wide aluminum
- **Pair of meeting rails:** 3 1/4" (83mm) high, aluminum
- **Top and bottom rails:** 3 3/8" (86mm) high, aluminum

### Glazing Sections

- 1/8" (3mm) thick or 1/4" (6mm) thick clear acrylic, polycarbonate, plain or tempered glass or 1/2" (13mm) thick sealed plain or tempered glass

\* Not available for A150

- Self-aligning glazing retainer

### Paneled Sections

Fabricated from 0.05" (1.29mm) thick stucco embossed aluminum sheet.

### Thermatite Bottom Section (optional top section)

Insulated sections fabricated from pre-painted, hot dipped galvanized, steel sheet; with rigid polyurethane insulation core, CFC and HCFC free, face sheet stucco embossed and rib reinforced.

A150 / A150T	<b>R</b> 13.21 ft <sup>2</sup> hF/Btu / <b>U</b> 0.430 W/m <sup>2</sup> K
A175 / A175T	<b>R</b> 16 ft <sup>2</sup> hF/Btu / <b>U</b> 0.355 W/m <sup>2</sup> K

### Reinforcement

0.105" (2.7mm) thick aluminum extrusion for hardware mounting. Full width integral horizontal, reinforcing truss at each pair of meeting rails.

Minimum depth of 1 3/4" (45mm)

### Maximum Opening Width

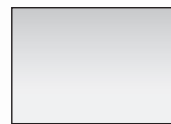
All Models	16'-2" (4928mm)
------------	-----------------

### Maximum Opening Height

All models	16'-0" (4877mm)
------------	-----------------

### Finish

Clear\* anodizing to AA Spec A-21 (Custom anodized colors are also available). White Duracron Super 600 thermo-setting acrylic enamel.



Clear Anodizing\*



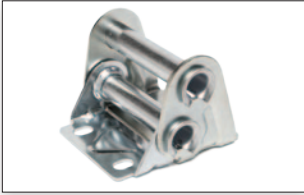
White

\* Not available for A150

## Warranty

**1 year on materials and workmanship**

# Standard Hardware



## Weatherstripping

Full length retainer and bulb weather strip minimize air flow and ensure weather-tightness at the base of your door.



## Trussing

Doors are constructed to withstand wind load specified in ANSI/DASMA 108. Linear style trusses are provided according to door size. Additional trussing can be provided for higher wind load applications.

## Track

Roll formed from commercial galvanized steel. Vertical tracks sloped to ensure weather tight seal. Horizontal track curve available in 12" (305mm) or normally provided 16" (406mm) radius.

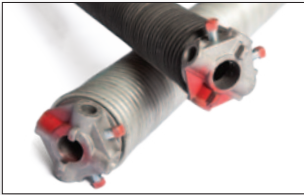


## Track Brackets

Bolted type, field adjustable, rib reinforced, stamped from 0.123" (3.1 mm) thick commercial galvanized steel.

## Rollers

Ten ball bearings provide years of smooth and quiet operation. 7/16" (11mm) diameter standard stem, long stem on doors over 16'-2" (4928mm) wide.



## Counter Balance

Helically wound torsion springs manufactured from oil tempered spring wire, stress relieved, minimum 10,000 cycles. Aluminum die-cast grooved drums. Flexible 7 x 19 construction aircraft type galvanized cables with 5:1 safety factor. Higher cycle available upon request.

## Horizontal Angle

72" (1829 mm) long or 90" (2286mm) for 3" hardware.

## Hinges

Linear type, fabricated from 0.078" or 0.106" (2 or 2.7mm) thick zinc plated steel with embossments designed to resist higher load and provide greater stability resulting in improved performance.

## Top Roller Carrier

Fabricated from zinc plated steel designed to provide greater stability, field adjustable to ensure weather tight seal.

## Roller Brackets

Linear type fabricated from 0.078" or 0.106" (2 or 2.7mm) zinc plated steel. Graduated type design to ensure weather tight seal.

## Shafts

1" (25mm) diameter 0.078" (2mm) tube or 1/8" (3mm) wall keyed full length or 1" (25mm) diameter cold rolled galvanized steel keyed full length.

## Head Plates

Full height fabricated from galvanized steel, complete with bolt-on type bearings.

## Lock

Interior slide bolt type.

## Mounting Fasteners

Zinc plated.

# Optional Hardware



## Thermatite

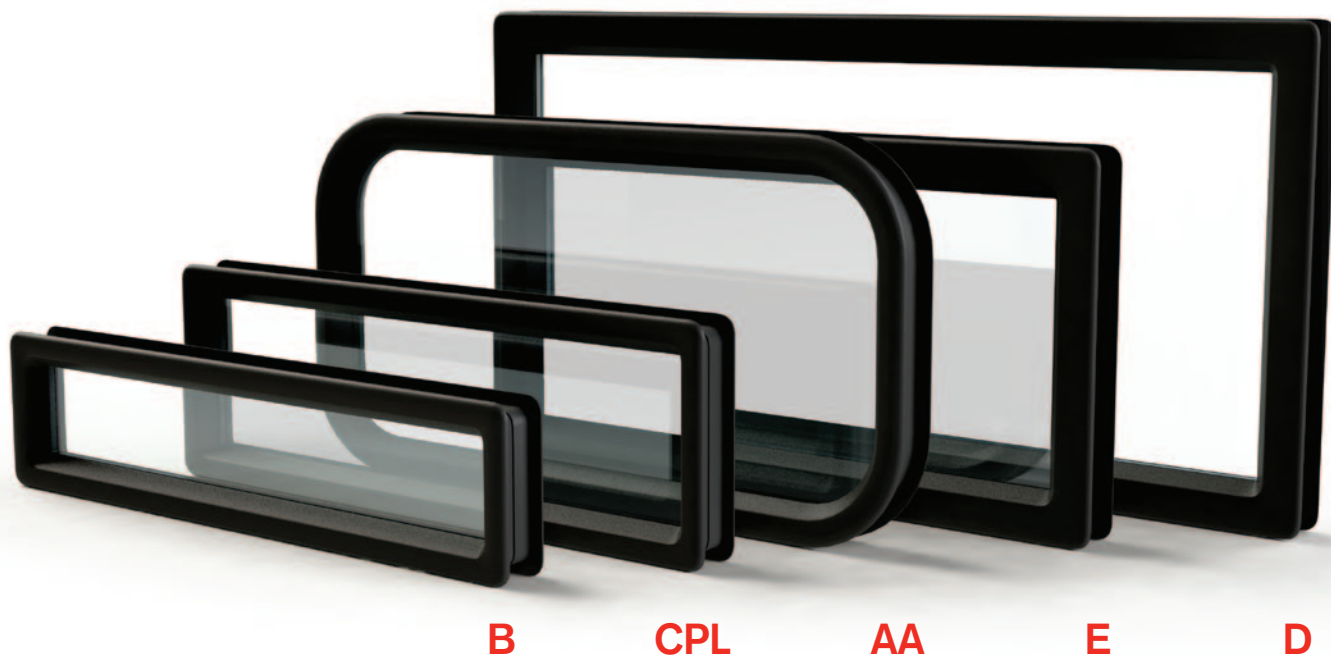
- Combination PVC step plate and lift handle
- **Exhaust port:** 3" (76 mm) / 4" (102mm) / 5" (127mm) diameter
- Flexible top weather strip for full width of door
- Full height thermal break and anti-friction strip for galvanized end caps
- Aluminum end stiles with full height jamb seal (Note: For T175-MR, T175, T175-20 only)
- **Pass doors:** 32" x 80" (813mm X 2032mm) four section pass door available in doors up to 16.2' (4928mm) (Note: \*14.2' (4381mm) for T150 and T200A)



## Alumatite

- **Exhaust port:** 3" (76 mm) / 4" (102mm) / 5" (127mm) diameter
- **Plywood Kick Panel:** 3/8" (9.5mm) thick plywood covered on both sides with 0.032" (0.8mm) aluminum or 0.037" (0.94mm) embossed steel sheets





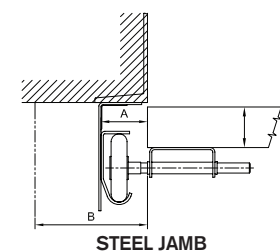
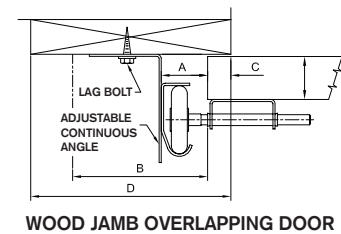
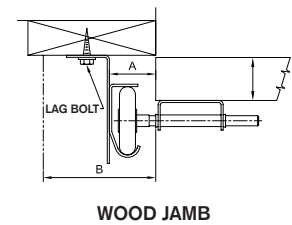
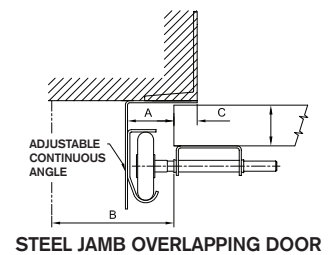
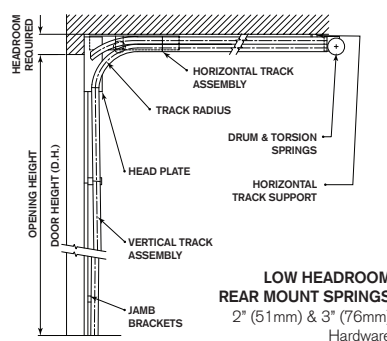
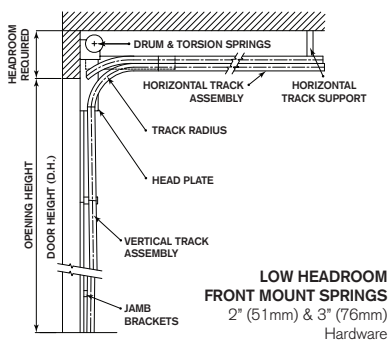
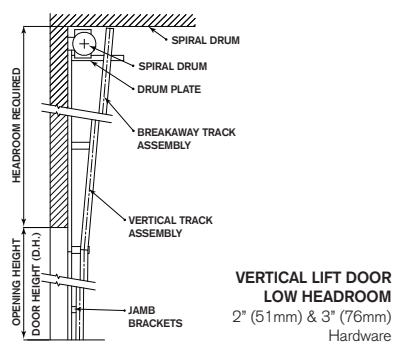
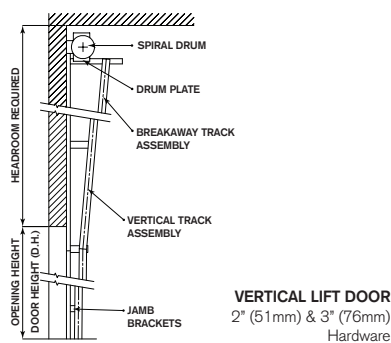
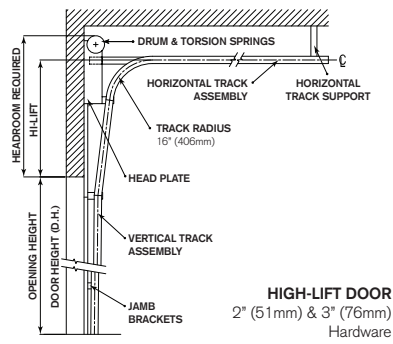
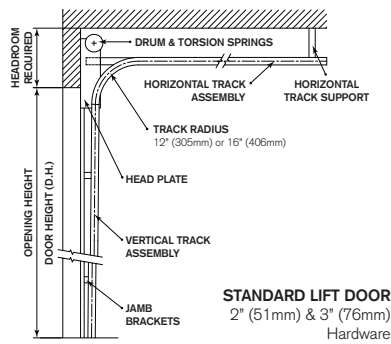
## Glazing Options

Type	Overall Dimensions	Frame Colour	Description
<b>B</b>	24" x 6" 610mm x 152mm	Black, White	Clear glass sealed unit set in moulded frame.
<b>CPL</b>	24" x 8" 610mm x 203mm	Black, White, Brown	Clear glass sealed unit set in moulded frame.
<b>AA</b>	26" x 13" 660mm x 330mm	Black, White	Dual acrylic unit set in moulded frame.
<b>E</b>	24" x 12" 610mm x 305mm	Black, White, Brown	Clear glass sealed unit set in moulded frame.
<b>D</b>	34" x 16" 864mm x 406mm	Black, White	Clear glass sealed unit set in moulded frame.
<b>FV</b>	Full Section Width		Full vision aluminum glass section – white, clear anodized* finish; 1/8" (3mm), (6mm*) acrylic, polycarbonate, plain or tempered glass, or 1/2" (13mm) sealed or tempered glass units.

\* Not Available for A150

# Clearance & Mounting Requirements

Door Style	Hardware size	Headroom Required	Track curve radius	Jamb Details			
				A	B	C	D
Standard Lift	2" (51)	13" (330) to 19-1/2" (495)	12" (305) or 16" (406)	1-1/2" (38)	3-1/2" (89)	1" (25)	5" (127)
	3" (76)	18" (457), 19" (482) or 21" (533)	16" (406)	2" (51)	4" (102)	1" (25)	6" (152)
Hi-Lift	2" (51)	H.L. + 7-1/2" (191) to H.L. + 10" (254)	16" (406)	1-1/2" (38)	3-1/2" (89)	1" (25)	5" (127)
	3" (76)	H.L. + 9-1/2" (241) to H.L. + 18-1/2" (470)	16" (406)	2" (51)	4" (102)	1" (25)	6" (152)
Vertical Lift	2" (51)	D.H. + 22" (559)	-	1-1/2" (38)	3-1/2" (89)	1" (25)	5" (127)
	3" (76)	D.H. + [22" (559) to 27-1/2" (699)]	-	2" (51)	4" (102)	1" (25)	6" (152)
Low Headroom Front Springs	2" (51)	11" (279) to 11-3/4" (298)	-	1-1/2" (38)	3-1/2" (89)	1" (25)	5" (127)
	3" (76)	13" (330) to 15-1/2" (394)	-	2" (51)	4" (102)	1" (25)	6" (152)
Low Headroom Rear Springs	2" (51)	5" (127) to 5-1/2" (140)	-	1-1/2" (38)	3-1/2" (89)	1" (25)	5" (127)
	3" (76)	7-1/2" (191)	-	2" (51)	4" (102)	1" (25)	6" (152)
Low Headroom Vertical Lift	2" (51)	D.H. + 10" (254) or D.H. + 4" (102)	-	1-1/2" (38)	3-1/2" (89)	1" (25)	5" (127)
	3" (76)	D.H. + 10" (254) or D.H. + 4" (102)	-	2" (51)	4" (102)	1" (25)	6" (152)





# Hardware Specifications

## Industry Standard 2" (51mm) Hardware

### Finish

All door face hardware, tracks, track mounting hardware and torsion assembly mounting brackets to be fabricated from commercial galvanized steel.

### Track

Roll formed from 0.078" (2mm) thick commercial galvanized steel, 2 1/8" (54mm) overall outside dimension. Vertical tracks sloped to ensure weather tight seal. Horizontal track curve available in 12" (305 mm) or normally provided 16" (406mm) radius.

### Lift Type

Standard-Lift, High-Lift, Vertical-Lift, Low-Headroom: Front and Rear mount springs. For inclined tracks, consult customer service.

### Vertical Track Mounting

#### Track Brackets (standard)

Bolted type, field adjustable, rib reinforced, stamped from 0.123" (3.1mm) thick commercial galvanized steel.

#### Clip Angle Mount (optional)

Pre-punched angle and clips, field adjustable to ensure weather tight seal and serviceability. The angles are fabricated from 0.093" (2.4mm) commercial galvanized steel.

#### Adjustable Continuous Angle ADCA (optional)

Bolted type, field adjustable to ensure weather tight seal and serviceability, fabricated from 0.093" (2.4mm) commercial galvanized steel, designed to provide continuous support to the vertical tracks.

### Track Hangers (optional)

Perforated type 1 1/4" x 1 1/4" (32mm x 32mm) angles roll formed from 0.078" (2mm) thick commercial galvanized steel.

### Rollers

Pre-punched angle and clips, field adjustable to ensure weather tight seal and serviceability. The angles are fabricated from 0.093" (2.4mm) commercial galvanized steel.

### Hinges

Linear type, fabricated from 0.078" or 0.106" (2 or 2.7mm) thick zinc plated steel with embossments designed to resist higher load and to provide greater stability that results in improved performance.

### Top Roller Carrier

Fabricated from zinc plated steel designed to provide greater stability, field adjustable to ensure weather tight seal.

### Roller Brackets

Linear type fabricated from 0.078" or 0.106" (2 or 2.7mm) zinc plated steel. Graduated type design to ensure weather tight seal.

### Counter Balance

Helically wound torsion springs manufactured from oil tempered spring wire, stress relieved, minimum 10,000 cycles. Aluminum die-cast grooved drums. Flexible 7 x 19 construction aircraft type galvanized cables with 5:1 safety factor.

### Shafts

1" (25mm) diameter 0.078" (2mm) tube or 1/8" (3mm) wall keyed full length or 1" (25mm) diameter cold rolled galvanized steel keyed full length.

### Head Plates

Full height fabricated from 0.093" (2.4mm) galvanized steel, complete with bolt-on type bearings

### Locking

Interior slide bolt type.

### Horizontal Angle

72" (1829mm) long.

### Mounting Fasteners

Zinc plated.

### Warranty

One (1) year.

## Industry Standard 3" (76mm) Hardware

### Finish

All door face hardware, tracks, track mounting hardware and torsion assembly mounting brackets to be fabricated from commercial galvanized steel.

### Track

Roll formed from 0.108" (2.7mm) thick commercial galvanized steel, 3 1/8" (80mm) overall outside dimension. Vertical tracks sloped to ensure weather tight seal. Horizontal track curve radius 16" (406mm).

### Lift Type

Standard-Lift, High-Lift, Vertical-Lift, Low-Headroom: Front and Rear mount springs. For inclined tracks, consult customer service.

### Vertical Track Mounting

#### Track Brackets (standard)

Bolted type, field adjustable, rib reinforced, stamped from 0.123" (3.1mm) thick commercial galvanized steel.

#### Clip Angle Mount (optional)

Pre-punched angle and clips, field adjustable to ensure weather tight seal and serviceability. The angles are fabricated from 0.093" (2.4mm) commercial galvanized steel.

#### Adjustable Continuous Angle ADCA (optional)

Bolted type, field adjustable to ensure weather tight seal and serviceability, fabricated from 0.093" (2.4mm) commercial galvanized steel, designed to provide continuous support to the vertical tracks.

### Track Hangers (optional)

Perforated type 1 1/4" x 1 1/4" (32mm x 32mm) angles roll formed from 0.078" (2mm) thick commercial galvanized steel.

### Rollers

Pre-punched angle and clips, field adjustable to ensure weather tight seal and serviceability. The angles are fabricated from 0.093" (2.4mm) commercial galvanized steel.

### Hinges

Linear type, fabricated from 0.098" or 0.106" (2.5 or 2.7 mm) thick zinc plated steel with embossments designed to resist higher load and to provide greater stability that results in improved performance.

### Top Roller Carrier

Fabricated from zinc plated steel designed to provide greater stability, field adjustable to ensure weather tight seal.

### Roller Brackets

Linear type fabricated from 0.078" or 0.106" (2 or 2.7mm) zinc plated steel. Graduated type design to ensure weather tight seal.

### Counter Balance

Helically wound torsion springs manufactured from oil tempered spring wire, stress relieved, minimum 10,000 cycles. Aluminum die-cast grooved drums. Flexible 7 x 19 construction aircraft type galvanized cables with 5:1 safety factor.

### Shafts

1" (25mm) diameter 0.078" (2mm) tube or 1/8" (3mm) wall keyed full length or 1" (25mm) diameter cold rolled galvanized steel keyed full length or 1 1/4" (32mm) cold rolled steel keyed full length.

### Head Plates

Full height fabricated from 0.093" or 0.123" (2.4 or 3.1mm) galvanized steel, complete with bolt-on type bearings.

### Locking

Interior slide bolt type.

### Horizontal Angle

90" (2286mm) long.

### Mounting Fasteners

Zinc plated.

### Warranty

One (1) year.

## Hardware Options: 2" (51mm) AND 3" (76mm)

### Pusher spring

Recommended for medium and large size standard lift doors with manual chain hoist and for all doors with Jackshaft type electric operators.

### Bumper spring

Recommended for small standard lift doors with manual chain hoist or Jackshaft type electric operators.

### Bumper leaf springs

Recommended for high lift and vertical lift door applications.

### Across the door bar latch

Complete with night lock with an outside cylinder and handle (recommended for manually operated doors only).

### Across-the-door bar latch inside only

Complete with night lock and interior handle. Electric interlock is required on electrically operated doors.

### Double end roller brackets and long stem rollers

Standard on doors wider than 16'-2" (4928mm).

### Rollers

2" (51mm): white nylon tire, 11 ball bearings, zinc plated stem available in standard and long stem.

3" (76mm): UHMW tire, precision sealed bearing, zinc plated stem available in long stem.

### Chain hoist

Chain and sprocket type design, recommended on doors over 144 sq. ft (13.4 sq. m).

### 2000R

Wall mountable, 4:1 reduction, available for 1" (25mm) or 1 1/4" (32mm) keyed shaft.

### JR

Shaft mountable, 4:1 reduction, available for 1" (25mm) and 1 1/4" (32mm) keyed shaft.

### JRG

Shaft mountable, 4.5:1 reduction, available for 1" (25mm) and 1 1/4" (32mm) keyed shaft.

### Follow the roof pitch

Track to follow roof pitch for standard lift and high lift.

### Higher cycle torsion spring assemblies

25,000, 50,000, 75,000 or 100,000 cycle torsion springs assemblies, recommended with 1" (25mm) or 1 1/4" (32mm) solid steel shaft with full key-way, shaft mounted in self-aligning flange bearings, flexible 7 x 19 construction aircraft type galvanized cables.

### Track guards

Formed from 3/16" (4.8mm) thick steel, 5'-0" (1524mm) high, chamfered top edge at 45 degree, grey finish. Optional: Baked yellow finish.

### Pull chain with spring

Recommended for manually operated doors only.

### Perimeter weather-strip

Double fin white, black, brown, taupe or almond vinyl with steel retainer for jams and lintel. Double fin black vinyl with aluminum retainer for jams and lintel.

ADCA bolt-on dual durometer black vinyl jamb seal recommended with section mounted top seal.

### Cable Fail Safety Bracket

Designed to stop the door from free fall in case of cable failure.

### Spring Fail Safety Device

Designed to stop the door shaft, thus the free fall of the door in case of spring failure, available without or with interlock switch to disconnect power to the electric operator.

### Exhaust port

Aluminum die cast available in 3" (76mm), 4" (102mm) and 5" (127mm) diameter.

### Full Length Horizontal Angle

Designed to support full length of the track.

Consistent with our policy of continuing product improvement, we reserve the right to make appropriate modifications without notice.



For more information on our Sectional Overhead Doors,  
please contact your local RW dealer.

Professionally installed and serviced by:

Richards-Wilcox Sectional Overhead Doors – Engineered for life  
5100 Timberlea Boulevard, Mississauga, Ontario Canada L4W 2S5

Toll Free: 1 (800) 667-1572 | Telephone: (905) 625-0037  
Fax: (905) 625-0057 | Email: [info@rwdoors.com](mailto:info@rwdoors.com)

[www.rwdoors.com](http://www.rwdoors.com)

ARCAT®

Member  
**DASMA**  
Door & Access Systems  
Manufacturers Association  
International

**IDA**

11.08.2011 | 1-0011B-CDE

Specifications subject to change without notice.